

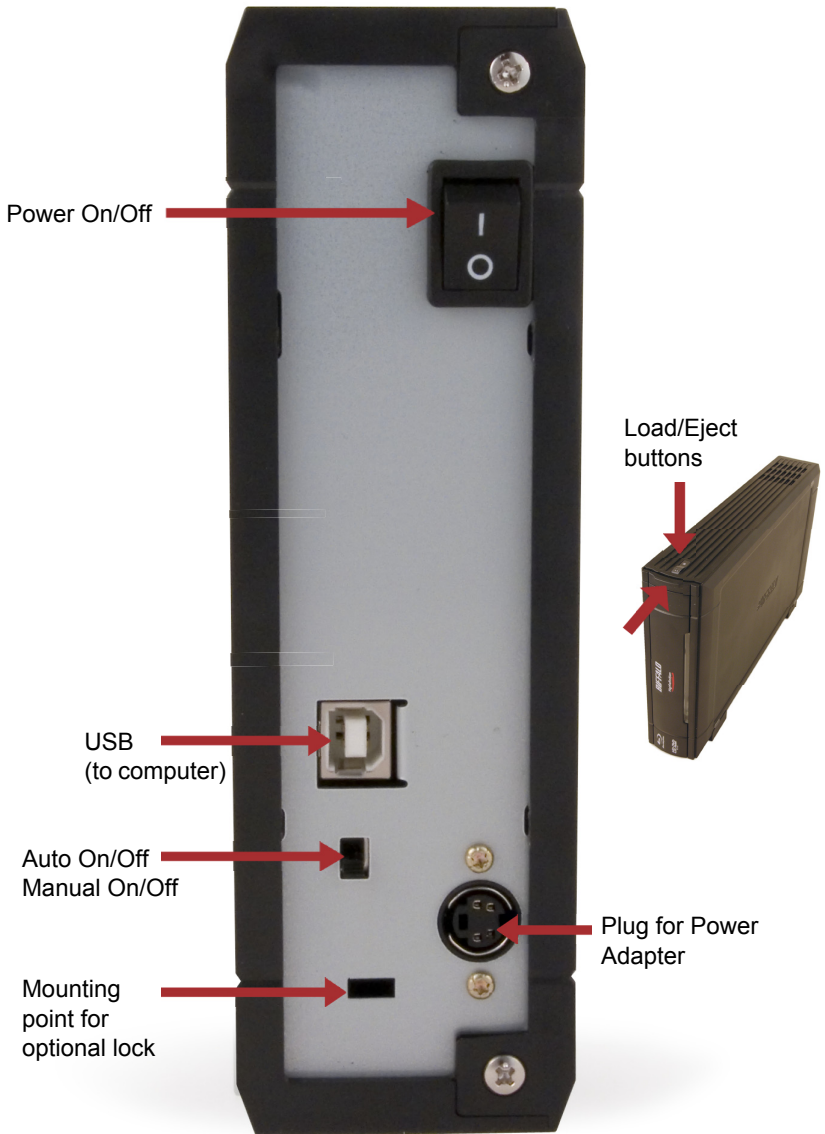
BRHC-6316U2 MediaStation High Definition Combo Blu-ray Writer with HD-DVD Player



BUFFALOTM

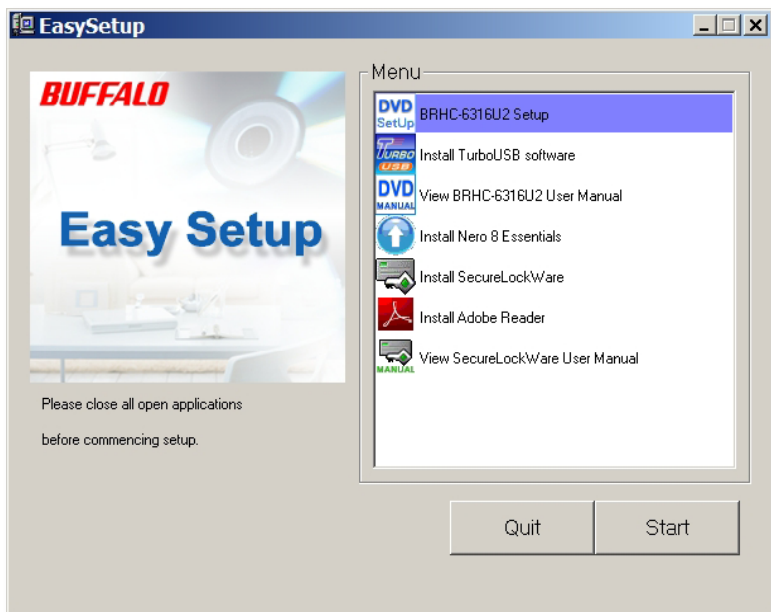
Package contents:

- Main Unit
- Power Adapter
- USB Cable
- Installation CD
- User Guide
- Warranty Statement



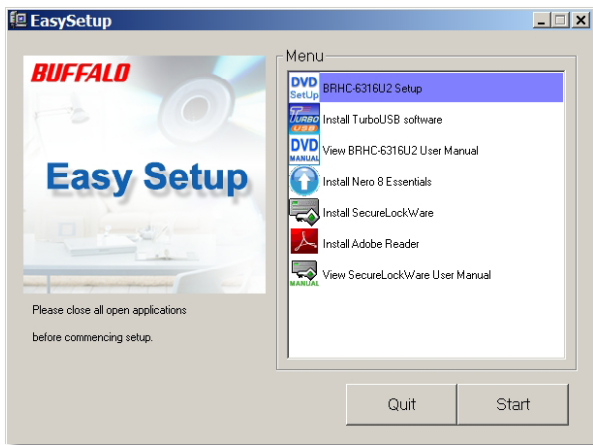
Thanks for purchasing the BRHC-6316U2 High Definition Combo Blu-ray Writer with HD-DVD Player. This versatile external drive connects easily to your computer's USB port, allowing you to play both Blu-ray and HD-DVD disks, as well as write to BR-Ds (recordable Blu-ray disks) and DVD-R, DVD+R, CD-R, and CD-RW disks.

To begin installation, insert the DriveNavigator CD in your PC. The setup program will run. Click *DVD Setup* and then Start to begin. Follow the steps to connect your drive.



After completing the setup wizard, your media drive is installed and ready to use!

Several optional utilities are included on your software CD. To install and use these utilities, insert the CD into your media drive.



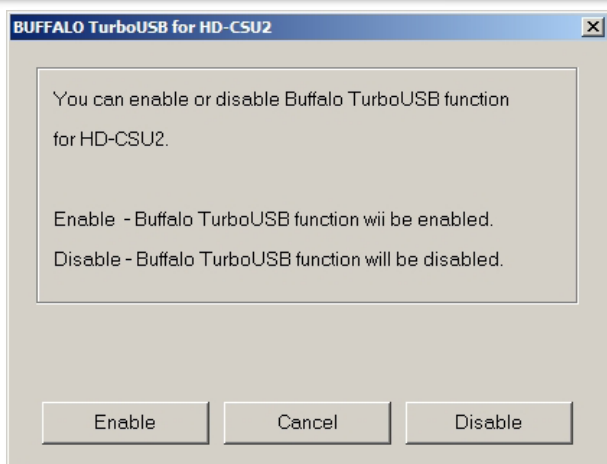
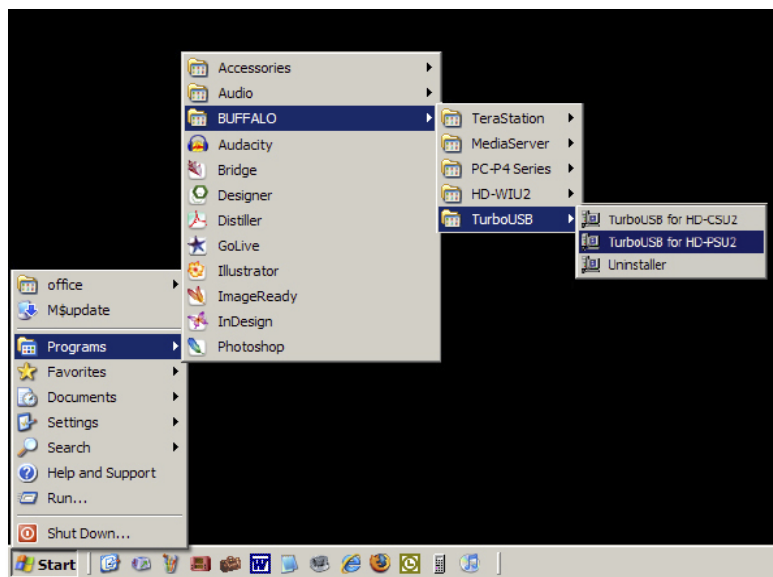
TurboUSB improves data transfer rates to and from your Media drive. After installing it, turn to the next page for instructions on configuring it.

Nero Essentials lets you burn information to CD-Rs, DVDs, and BR-D writable disks. It also includes software to watch video and movies.


SecureLockWare encrypts the data on your Media drive, preventing the data from being accessed by anyone but you.

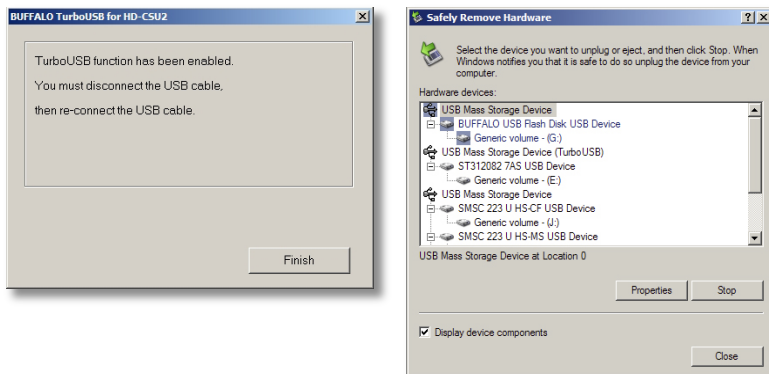
Adobe Reader lets you read documents in pdf format, such as the BRHC's user manuals, also available from this menu.

To use TurboUSB, you must first *enable* it. From the *Start* menu, choose *Programs > BUFFALO > TurboUSB > TurboUSB for BRHC*.



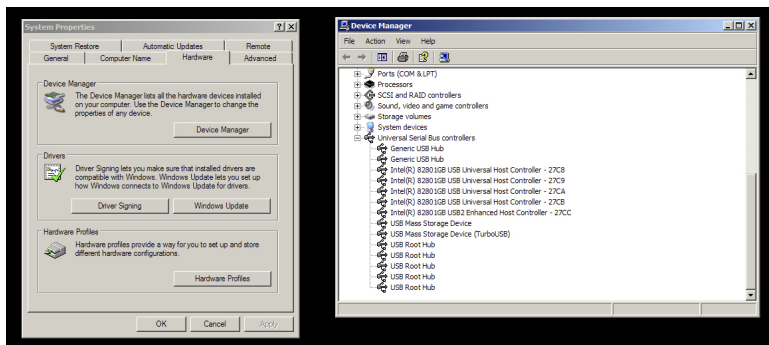
Click *Enable* and follow the directions to start TurboUSB.

When the wizard instructs you to disconnect and then reconnect the USB cable, click on the 'Safely Remove Hardware' icon  in the systray and release the device before unplugging it.

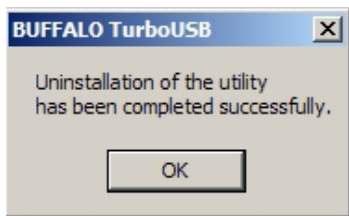
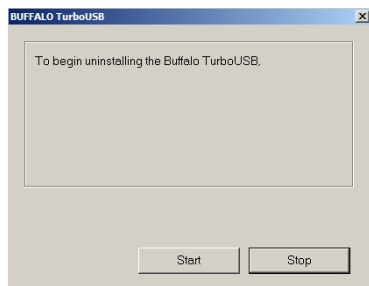
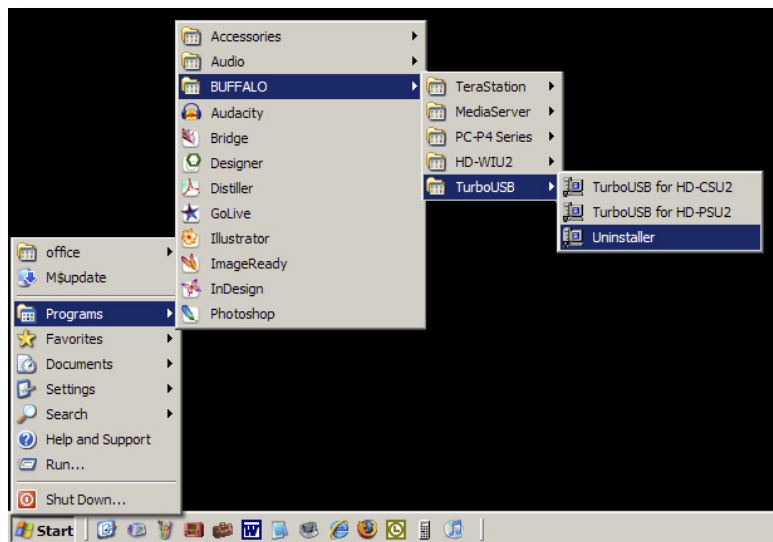


You may also turn TurboUSB off from the same window by clicking Disable and following the steps. You will have to unplug and reconnect the USB hard drive to complete disabling TurboUSB. Use the 'Safely Remove Hardware' wizard to release the drive before unplugging it.

To check whether TurboUSB is enabled, right-click on My Computer and choose Properties > Hardware > Device Manager > Universal Serial Bus controllers. If TurboUSB is enabled, your USB storage device will have "(TurboUSB)" added to its name.



To remove the Buffalo TurboUSB utility from your computer, click *Start > Programs > BUFFALO > TurboUSB > Uninstaller*. This will launch an uninstall screen. Click on *Start* to run the uninstallation.



Data Transfer Speed:	Max 480 Mb/s (USB 2.0 spec)
Blu-ray (and BD-R):	6x Read/Write (with TurboUSB enabled)
HD-DVD:	3x Read
BD-RE:	2x Read/Write
DVD-R:	12x Read/16x Write
DVD+R:	12x Read/16x Write
DVD-RW:	10x Read/6x Write
CD-R:	40x Read/Write
CD-RW:	40x Read/24x Write
Power Supply:	AC 100V-240V 50/60Hz (autosensing)
Dimensions:	6.5 x 2.0 x 11.1 inches (164 x 50 x 281 mm)
Weight:	3.4 lbs. (1.56 kg)
Operating Environment:	41° - 95° F (5° - 35° C) 20-80% humidity (non-condensing)
Power Consumption	~25 Watts
Windows Compatibility:	Windows 2000, XP, Vista

FCC Warning

This device complies with part 15 of the FCC Rules. Operation is subject to the following two conditions: (1) This device may not cause harmful interference, and (2) this device must accept any interference received, including interference that may cause undesired operation.

Class 1 Laser Product

This product contains a low power laser device. To ensure continued safety, do not remove any covers or attempt to gain access to the inside of the product. Refer servicing to qualified personnel.

BUFFALOTM

<http://www.buffalotech.com>

USA/Canada Technical Support is available 24 hours a day, 7 days a week

toll-free: 866-752-6210

email: info@buffalotech.com