

Quick Setup Guide

LinkStation Pro



BUFFALOTM

Package Contents:

- ▶ Main Unit (LinkStation)
- ▶ Ethernet Cable
- ▶ Power Cable
- ▶ LinkNavigator Installation CD
- ▶ Quick Setup Guide (this manual)
- ▶ Warranty Card

Step 1: Connect your Cables

Plug LinkStation's power cord and Ethernet cable into the back of the LinkStation.



Connect the power plug to a surge protector or power outlet. Plug the other end of the Ethernet cable into a hub, switch, or router on your local network.



Step 2: Check your Connection



Press the power button on the front panel to turn your LinkStation on.

Check the LINK/ACT LED on the front of the LinkStation. If it's lit, then your LinkStation is connected properly. Please turn to *page 4* to continue setup.

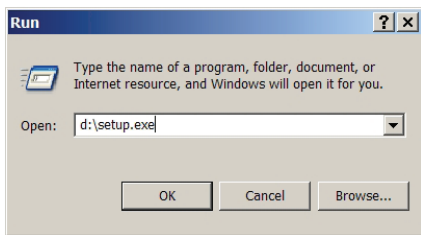
If the LINK/ACT LED on the front of LinkStation is **not** lit, your LinkStation is not properly connected to your network. Make sure that:

- both LinkStation and the hub, switch, or PC are powered on,
- the Ethernet cable is securely fastened to both devices, and
- the Ethernet cable is not damaged. To verify, try using another Ethernet cable.

If problems persist, contact our technical support.

Step 3: Installing Software

Insert the LinkNavigator CD into your computer's CD-ROM drive. If Setup doesn't launch automatically, you can launch it manually by clicking **Start**, then **Run...** When the Run dialog opens, type **d:\setup.exe** (where "d" is the drive letter of your CD-ROM). Press **OK** to continue. If you are installing the software on a Mac, open the cd and click **LinkNavigator** to begin installation.



Press the **Begin Installation** button to begin.

If you're installing on a Mac, skip to the next page.

If you're installing on a PC, click on **Connect this PC to LinkStation** (the green, lower button).

Click **Next** to step through the installation.



Continue pressing **Next** to step through the installation.



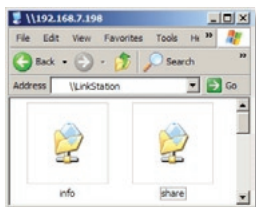
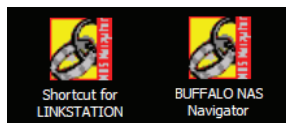
When installation is complete, you may close the installation window.

Congratulations! Your LinkStation is ready to use. Turn to page 6 for more on using your LinkStation with a PC, or page 7 for more on using your LinkStation with a Mac.

Please see the **LinkStation User Manual** on your LinkStation cd for more help and configuration options.

Using your LinkStation with a Windows PC

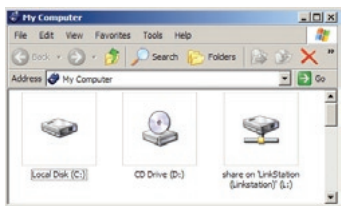
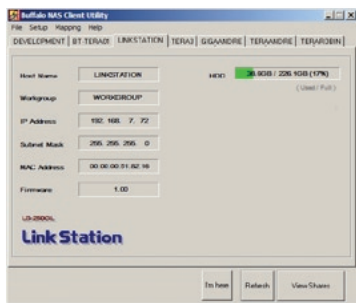
If you're using a Windows PC, two new icons will be on your desktop: **Shortcut for LinkStation** and **Buffalo NAS Navigator**.



The LinkStation shortcut will take directly to the folders on your LinkStation.

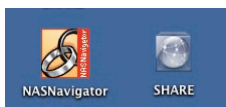
Share is the main folder that you can put files and folders in. **Info** contains a copy of your user manual.

The **Buffalo NAS Navigator** icon opens the LinkStation's client utility. This lets you easily view system information for your LinkStation(s). If you click **Setup** and choose **Configuration Settings**, it will take you to the settings configuration GUI, where you may change your LinkStation's settings. Until you change it, the GUI's username is "admin" and the password is "password". Consult your user manual for more information on the Buffalo NAS Navigator and the Settings Configuration GUI.



Another way to access folders and data on your LinkStation is through the mapped drive letter 'L'. When the installation program ran, it added your LinkStation's main "share" folder to your "My Computer" folder as drive 'L'. Use this virtual hard drive like any other hard drive on your computer. You may add additional shares and mapped drive letters to your LinkStation and PC; consult your user manual for more information.

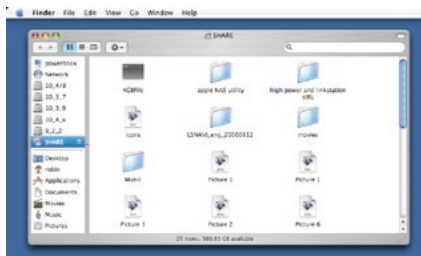
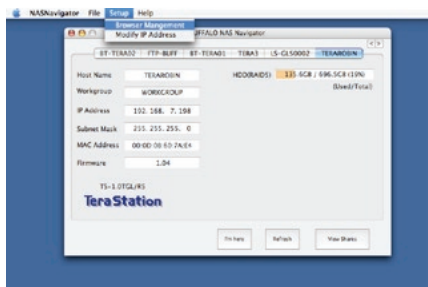
Using your LinkStation with a Mac



After installing the LinkNavigator software, your Mac will have two new icons on the desktop.

The **Share** folder is the main folder that you can put files and folders in. **NASNavigator** is the LinkStation's client utility.

Clicking **NASNavigator** icon opens the LinkStation's client utility. This lets you easily view system information for your LinkStation(s). If you click **Setup** and choose **Browser Management**, it will take you to the settings configuration GUI, where you may change your LinkStation's settings. Until you change it, the GUI's username is "admin" and the password is "password". Consult your user manual for more information on the Buffalo NAS Navigator and the Settings Configuration GUI.



Clicking **Share** opens the main folder on the LinkStation. You may add additional shares to your LinkStation; consult your user manual for more information.

Technical Specifications

LAN Standards:	IEEE 802.3u, IEEE 802.3ab, IEEE 802.3
Transmission:	1000BASE-T: 8B1Q4, PAM5; 100BASE-TX: 4B5B MLT-3, MLT-3; 10BASE-T Manchester Coding
Access Media:	CSMA/CD
Media Interface:	RJ-45
USB Standard:	USB 2.0 Hi-Speed (HS) Full-Speed (FS) Low-Speed (LS)
USB Connector:	USB A Connector (2)
Data Transmission Speed:	Max: 480 Mbps (HS Mode) Max: 12 Mbps (FS Mode)
Electric Current:	120V A/C
Power Consumption:	~21W
Dimensions:	2.4" x 6.3" x 8.5" (60 x 160 x 216 mm.)
Weight:	~3.5 lbs
Operating Temperature:	41-95° F; 20-80% non-condensing

Technical Support

Buffalo Technology offers free technical support. See the back page of this quick start guide for contact information. Please also visit the web site at <http://www.buffalotech.com>.

FCC Warning

This device complies with part 15 of the FCC Rules. Operation is subject to the following two conditions: (1) This device may not cause harmful interference, and (2) this device must accept any interference received, including interference that may cause undesired operation.

BUFFALOTM

<http://www.buffalotech.com>

USA/Canada Technical Support is available 24 hours a day, 7 days a week

Toll-Free: 866-752-6210

email: info@buffalotech.com

Europe Technical Support is available between 9am-6pm (Monday-Thursday) (GMT)
and 9am-4:30pm on Fridays.

email: helpdesk@buffalo-technology.ie