

# User Manual

## LinkStation WebAccess



With Buffalo's WebAccess, you can access your LinkStation from anywhere in the world with an Internet connection. It's easy to access your files, or share them with other people, wherever they may be.

Buffalo's WebAccess is designed to be simple to set up and simple to use. This manual will be your guide.

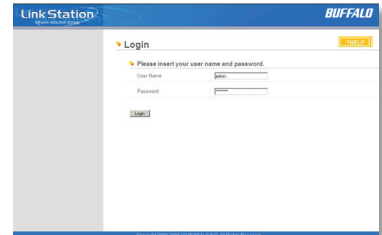
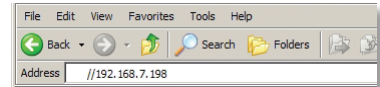
Future user interfaces for your LinkStation, updated software, and later versions of this manual may be available for download at [www.buffalotech.com](http://www.buffalotech.com). Additional information on WebAccess, FAQs, and updates are available at [www.buffalonas.com/help](http://www.buffalonas.com/help).

WebAccess Setup.....	4
Using WebAccess .....	7
Contact Information .....	9

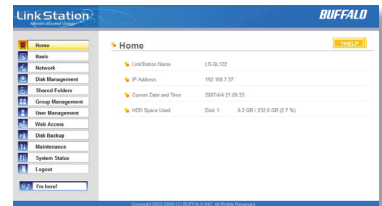
Your LinkStation should be installed and working before you configure WebAccess. If you haven't set it up yet, consult your User Manual for directions.

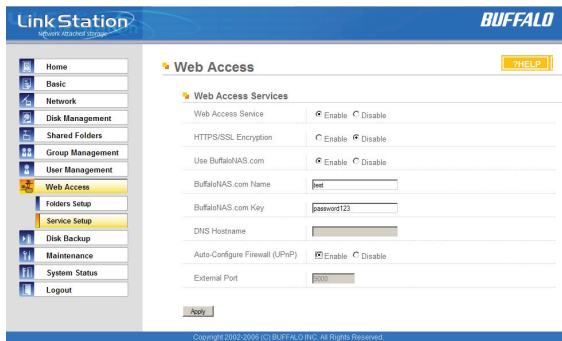
In an open browser window of your PC, type the IP address of your LinkStation. (Or, from the client utility, select *Browser Management*.)

Enter your user name and password.



The LinkStation Configuration GUI will open.





First, select 'Web Access', and then 'Service Setup' from the menu on the left.

To use Webaccess, set 'Web Access Service' to *Enable*.

You may enable SSL Encryption if desired.

Using 'BuffaloNAS.com' is recommended.

Otherwise, you'll have to manage your own DNS settings.

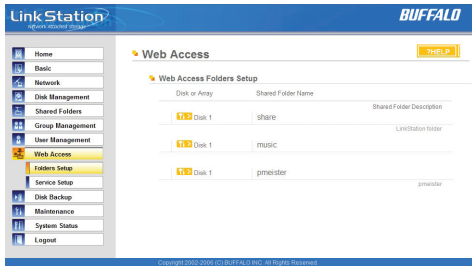
'Auto-Configure Firewall' is also recommended if your router supports UPnP (most do since 2001). If you choose not to enable this, you


must manually configure your router and firewall to forward internal port 9000 to the Internet.

Choose a name for your BuffaloNAS account and a password ("key"). This name is the name that will be used to access your LinkStation and to share with your friends. The password for this protects other people from using it, so picking a strong password is recommended.

Click *Help* in the top right of the window for detailed information on each setting.

# Configuring WebAccess



Select 'Folders Setup' in the left-side menu. Any shares on your LinkStation will appear on the list to the right. Click on the  icon beside it to select a share for web access.

Choose your desired level of Web Access from the 'Web Access Settings' dropbox:

'Disable' will prevent remote access to this share through WebAccess. This is the default setting.

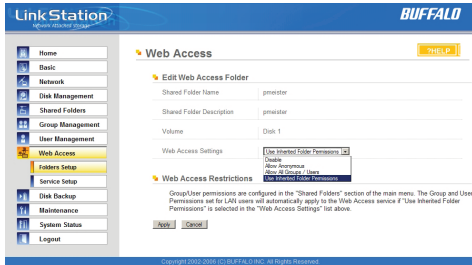
'Allow Anonymous' will allow *anyone* to access the share. Don't use this setting unless you want your LinkStation share to be available publicly to everyone in the world!

'Allow All Groups/Users' will allow only people who have an account on the LinkStation to access this share remotely.

'Use Inherited Folder Permissions' will allow people with an account on the LinkStation to access the share remotely only if they have read permissions on the specific share that they're accessing.

Consult your user manual for more information on setting up groups, users, and permissions on the LinkStation.

Click the *Apply* button to save your changes.



To access your LinkStation remotely, open a browser window on any computer connected to the Internet and go to *buffalonas.com*.

In the dialog box, type the BuffaloNAS name that you set on page 5.

Alternately, you can go directly to your share by typing *BuffaloNAS.com/your\_BuffaloNAS\_name* in the URL window.

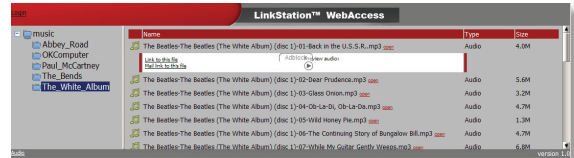
The folders from your LinkStation's share will appear. Files from anonymous shares will appear to the right. To see files from shares that are not set to anonymous, you will need to *log in*. The 'login' link is on the top left corner of the page.





To access individual folders on the right, click on their *open* links.

Clicking on individual files will give you other options, depending on the filetype. Clicking on the *Audio* link at the bottom left corner of the page will give you options for playing music files, including the opportunity to launch a JAVA based player that will stream your audio files directly through the Web interface.





Buffalo Technology USA Inc.  
4030 West Braker Lane, Suite 120  
Austin, TX 78759-5319

### GENERAL INQUIRIES

Monday through Friday  
8:30am-5:30pm CST

**Direct:** 512-794-8533 | **Toll-free:** 800-456-9799 | **Fax:** 512-794-8520 | **Email:** [sales@buffalotech.com](mailto:sales@buffalotech.com)

### TECHNICAL SUPPORT

North American Technical Support by phone is available 24 hours a day, 7 days a week. (USA and Canada).

**Toll-free:** (866) 752-6210 | **Email:** [info@buffalotech.com](mailto:info@buffalotech.com)

Buffalo Technology UK Ltd.  
176 Buckingham Avenue,  
Slough, Berkshire, SL1 4RD  
United Kingdom

### **GENERAL INQUIRIES**

Email: *sales@buffalo-technology.com*

### **TECHNICAL SUPPORT**

Phone (UK only): 08712 50 12 60\*

Phone: +353 61 70 80 50

Email: *helpdesk@buffalo-technology.ie*

\*Calls cost 8.5p per minute

Technical Support Operating Hours

Monday - Friday (GMT)

9:00 AM - 6:00 PM Monday-Thursday

9:00 AM - 4:30 PM Friday